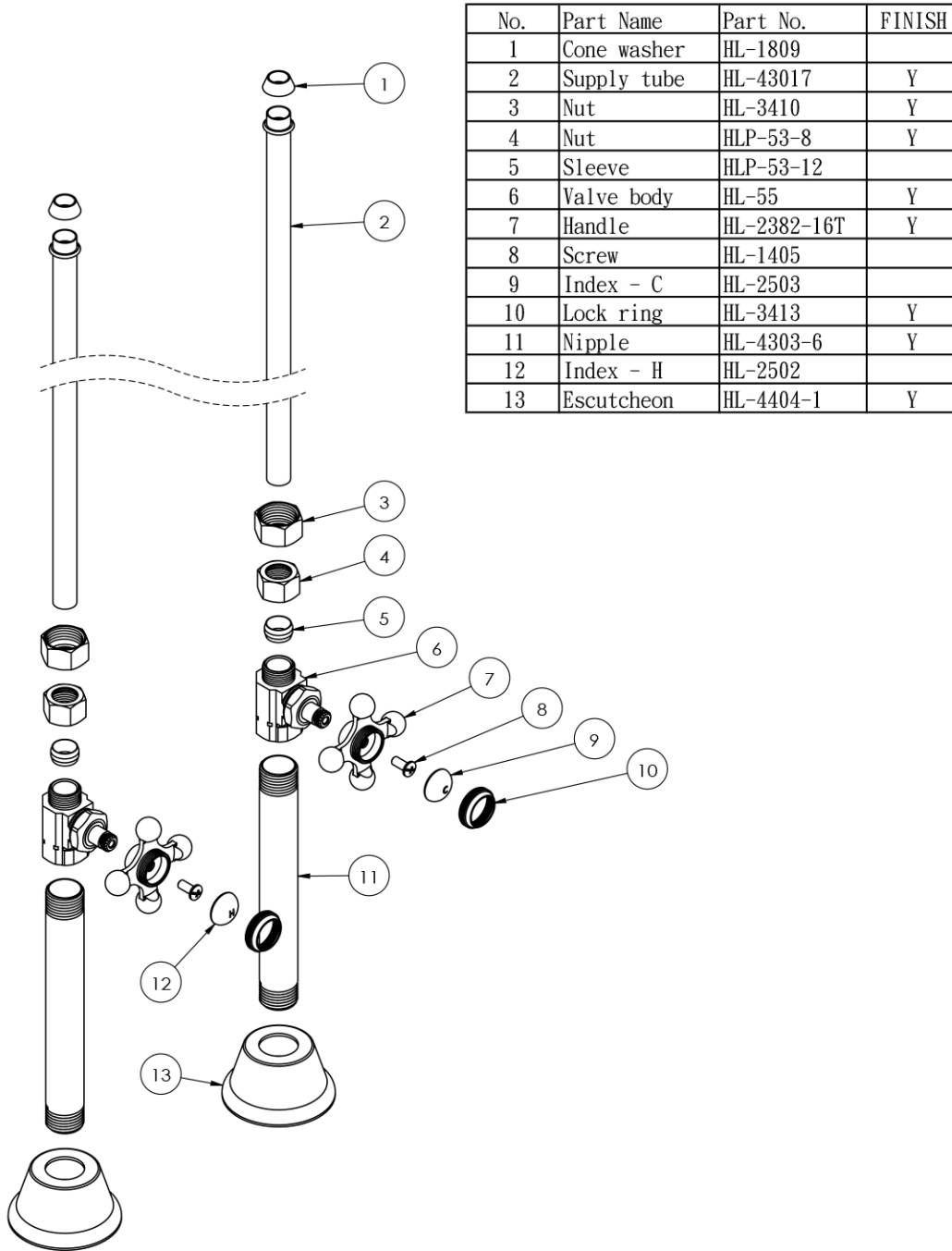




## Straight Tub Supply Lines by Randolph Morris

Item #: RMH55--



| No. | Part Name   | Part No.    | FINISH |
|-----|-------------|-------------|--------|
| 1   | Cone washer | HL-1809     |        |
| 2   | Supply tube | HL-43017    | Y      |
| 3   | Nut         | HL-3410     | Y      |
| 4   | Nut         | HLP-53-8    | Y      |
| 5   | Sleeve      | HLP-53-12   |        |
| 6   | Valve body  | HL-55       | Y      |
| 7   | Handle      | HL-2382-16T | Y      |
| 8   | Screw       | HL-1405     |        |
| 9   | Index - C   | HL-2503     |        |
| 10  | Lock ring   | HL-3413     | Y      |
| 11  | Nipple      | HL-4303-6   | Y      |
| 12  | Index - H   | HL-2502     |        |
| 13  | Escutcheon  | HL-4404-1   | Y      |

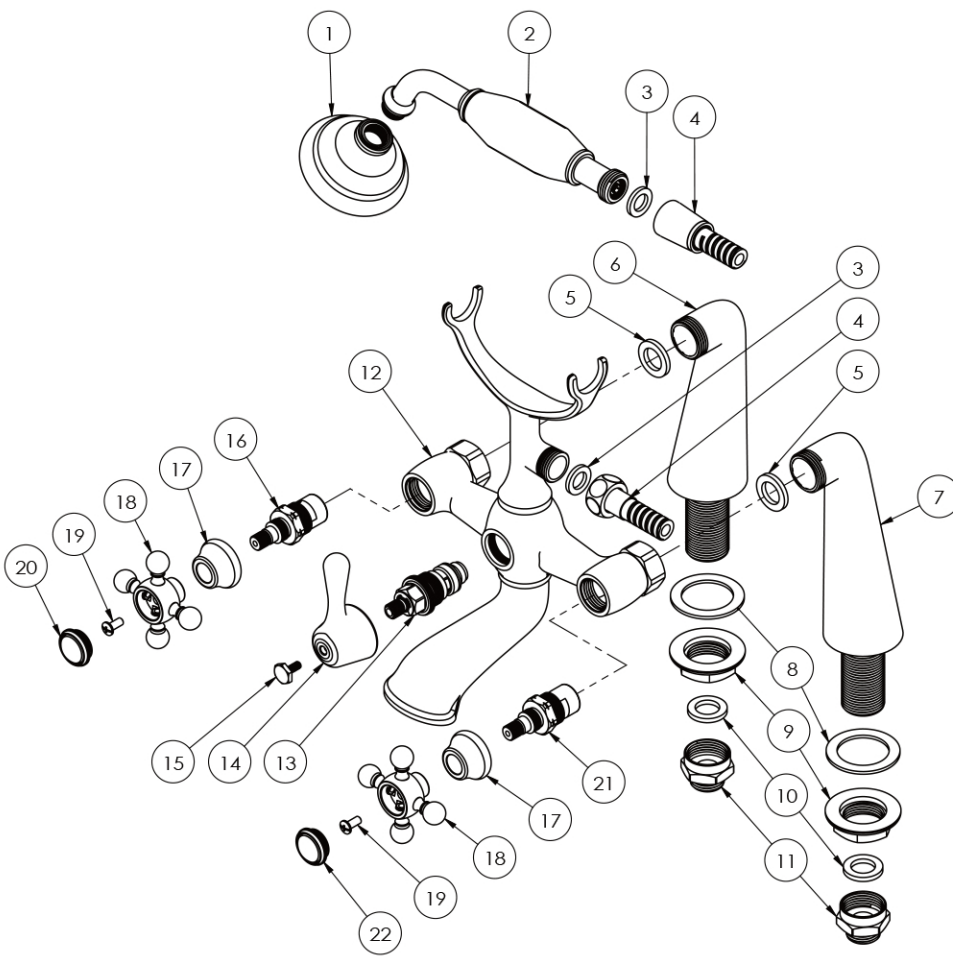
All products and specifications are subject to change without notice. Randolph Morris is not responsible for typographical and/or dimensional errors. Typographical errors are subject to correction.

Note: Rough-in dimensions may vary +/- 1/2" and are subject to change. No responsibility is assumed by Randolph Morris.



## Traditional Deck Mount Tub Faucet by Randolph Morris

Item #: RMH310



| No. | Part Name          | Part No.     | FINISH |
|-----|--------------------|--------------|--------|
| 1   | Shower head        | HL-3710      | Y      |
| 2   | Hand held          | HL-4364+5705 | Y      |
| 3   | Washer             | HL-5002-1    |        |
| 4   | Hose               | HL-5002      | Y      |
| 5   | Washer             | HL-1830      |        |
| 6   | Deck coupler- Hot  | HL-29004     | Y      |
| 7   | Deck coupler- Cold | HL-29003     | Y      |
| 8   | Washer             | HL-1859      |        |
| 9   | Locknut            | HL-3449      | Y      |
| 10  | Washer             | HL-1830      |        |
| 11  | Adapter            | HL-3437      | Y      |
| 12  | Faucet body        | HL-310BD     | Y      |
| 13  | Diverter           | HL-1715      |        |
| 14  | Handle             | HL-23003     | Y      |
| 15  | Hex screw          | HL-14002     |        |
| 16  | Cartridge - Hot    | HL-162M-32TH |        |
| 17  | Escutcheon         | HL-2166      | Y      |
| 18  | Cross Handle       | HL-23021     | Y      |
| 19  | Screw              | HL-1405      |        |
| 20  | Index- Hot         | HL-2514-H    | Y      |
| 21  | Cartridge - Cold   | HL-162M-32TC |        |
| 22  | Index- Cold        | HL-2514-C    | Y      |

All products and specifications are subject to change without notice. Randolph Morris is not responsible for typographical and/or dimensional errors. Typographical errors are subject to correction.

Note: Rough-in dimensions may vary +/- 1/2" and are subject to change. No responsibility is assumed by Randolph Morris.