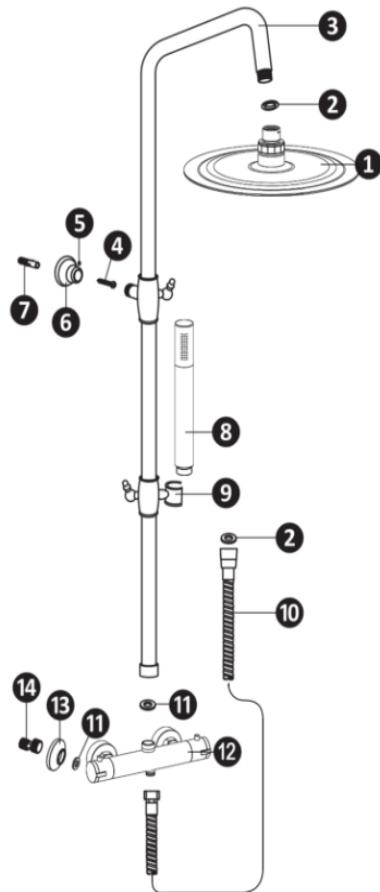


# Shower Installation Instruction

Please check the parts carefully according to the standard part list after you picking out the products.  
Please contact with the local distributor if any missing parts. See the drawings as below:



No	Name
1	Shower head
2	O-ring
3	Shower rod
4	Mounting screw
5	Hexagonal nut
6	Mounting bracket
7	Anchor
8	Hand shower
9	Hand shower bracket
10	shower hose
11	Inner ring
12	Faucet
13	Escutcheon
14	S-connector

## Installation Steps:

- 1.Wrap the S-connectors with teflon tape, and thread the connectors onto the hot&cold water supply pipes. Tighten with your adjustable wrench.
- 2.Use a level to verify the connectors are aligned properly. Adjust as necessary.
- 3.Thread the inner rings onto the S-connectors, keeping the threaded portion facing outward. Place the escutcheons on the inner rings with the horn mouth facing inward,and push them against the wall.
- 4.Attach the connecting nuts of the faucet to the S-connector, and tighten.
5. Attach the connecting rod to the shower rod. Hold the mounting bracket in place in the desired mounting location.
6. Attach the shower rod to the faucet body. Use a level to very that the shower rod is in the proper location. When all pieces are properly aligned, mark the location of the mounting bracket on the wall.
- 7.Remove the shower rod, and drill hole at the location marked in the previous step. Insert the wall anchor. Attach the mounting bracket to the wall with mounting screws.
- 8.Connect the shower rod to the faucet body and the mounting bracket. Tighten the screw to secure.
- 9.Thread the shower head onto the shower rod.
10. Connect the hand shower and shower hose.