



Randolph Morris

Freestanding Tub Filler Faucet Installation Guide

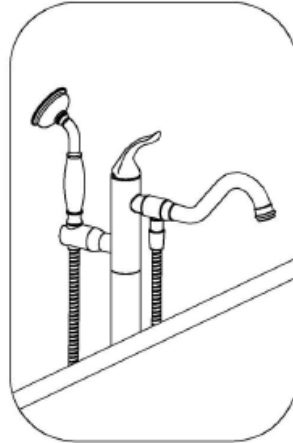
Confirm:

Inspect the faucet make and model number within 48 hours. Inspect the faucet parts and accessories package with the part list within 48 hours.

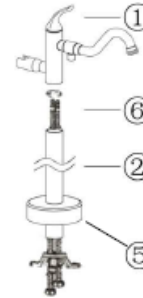
All pipe rough-ins are in the proper location. The height of this product should match the height of the bathtub.

Caution:

Handle all parts with care
 Read all instructions before installing
 Properly test all water connections
 No soldering or heat is required for this product
 Do not over tighten pipe connection
 All locale and state plumbing codes apply



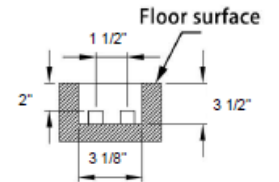
Step 1: Connect the hot and cold water supply lines (6) to the faucet body (1) and tighten. Slip straight riser tube (2) into floor escutcheon(5)



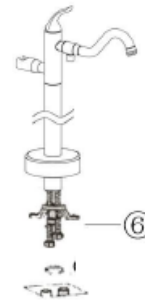
Step 2: Slide the assembled straight riser (2) up and over the water supply lines (6) tighten onto faucet body (1)



Step 3: Layout and rough-in the owners hot & cold water supply lines as per detail below.



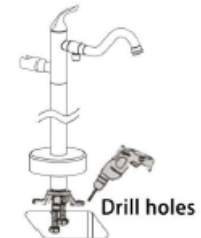
Step 4: Connect the hot and cold water supply lines (6) to the owners water supply piping and tighten.



Step 5: Connect the floor bracket (7) to the riser tube (2) and tighten with the supplied hex wrench (3) hex screw (4)



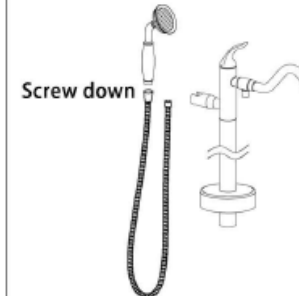
Step 6: Set faucet assembly on the floor in the prepared location. Mark out on the floor the mounting bracket attachment holes and drill holes accordingly.



Step 7: Install the floor bracket expansion screws (8) into the prepared floor holes, set the faucet onto the floor, tighten down and secure.



Step 8: Install the shower hose (10) onto the faucet body (1) and tighten snugly. Fasten the shower hose (10) onto the hand held shower (9) and tighten snugly.



Completed Faucet



NO.	Parts Name	Qty
1	Faucet Spout & Body	1
2	Riser Tube	1
3	Hex Wrench	1
4	Hex Screw	1
5	Floor Escutcheon	1
6	Hot/Cold Water Lines	2
7	Floor Bracket	1
8	Floor Bracket Screws	3
9	Hand Held Shower	1
10	Shower Hose	1

