

TUB FAUCET INSTALLATION GUIDE

BEFORE YOU BEGIN

1. Shut off water supply.
2. Carefully inspect waste and supply tubing for signs of damage.
3. Replace waste or supply tubing if necessary

INSTRUCTIONS

1. Apply tape or putty to both ends of hot and cold supply nipples (6). Thread the nipples into couplers (5).
2. Attach the rubber washer into coupler nut, connect with faucet body (4).
3. Set the faucet onto tub and nipples go through the tub wall holes.
4. Slide the metal washer (7) and install the lock nut (8) tighten with wrench.
5. Attach the cradle (3) to faucet body with rubber washer.
6. Attach the shower hose (2) to cradle with rubber washer.
7. Connect the water supply lines to coupler nipples.
8. Turn on the water supply and open the faucet valves. Check for any leaks. If leakage occurs, tighten connections again as necessary. Let the water flow through the shower hose for approximately 30 seconds to clear out debris and dirt.
9. Connect the hand-held shower (1) with shower hose and check leaks.

COMPLETE INSTALLATION

Note: All connections nuts, do not tighten more than 1/4 turn beyond hand tight.

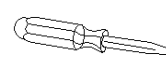
TOOLS AND MATERIALS



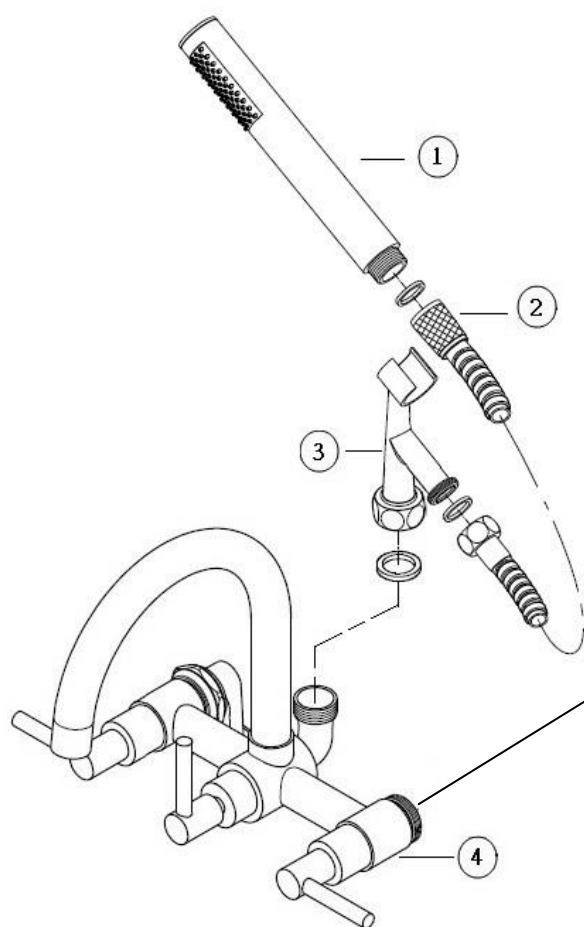
Adjustable wrench



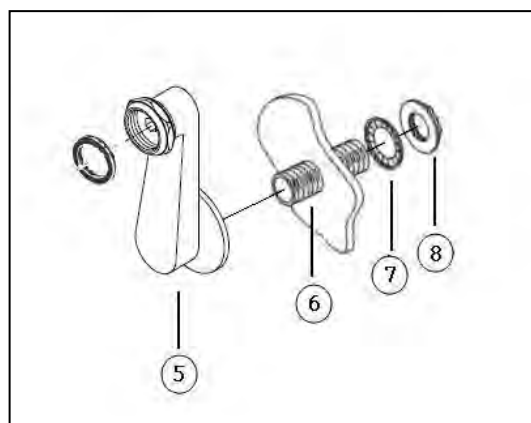
Teflon Tape



Screwdriver



WALL MOUNT



DECK MOUNT

