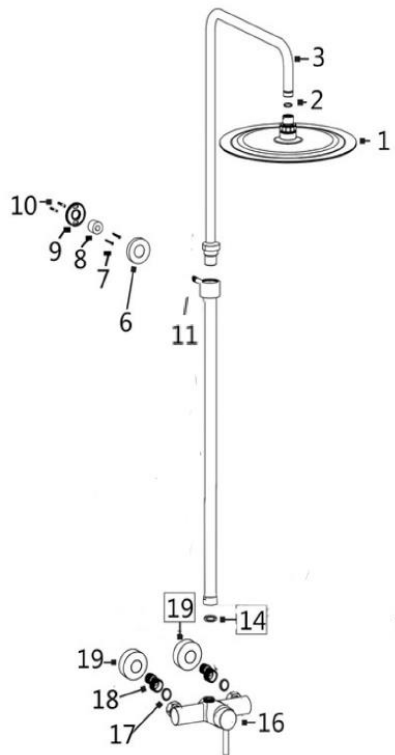


## RMBSR20 Shower Installation Instructions



Part No.	Part Name	Qty
1	Shower Head	1
2	O-ring	2
3	Shower Pipe	2
6	Escutcheon	2
7	Mounting Screws	2
8	Hex Nut	1
9	Mounting Bracket	1
10	Anchor	1
11	Shower Bracket	2
14	O-ring	1
16	Faucet	1
17	Inner Ring	2
18	Offset pipe Connector	2
19	Escutcheon	2

### **Maintenance Manual**

Before installing, read entire Exposed Pipe Shower Installation Instructions. Observe all local building and safety codes.

For the following installation instructions, it is assumed that the water supply lines have been installed in the desired location behind the finished wall and are accessible for shower installation.

Unpack and inspect the product for any shipping damages. If you find damages, do not install. Contact Customer Service. If you need assistance or have questions while installing your shower, contact customer Service.

We recommend consulting a professional if you are unfamiliar with installing bathroom fixtures. The supplier assumes no liability for any damage to the floor, walls, plumbing or for personal injury during installation

1. Wrap the offset threaded pipe connections (18) with Teflon, screw the offset threaded pipe connectors into the existing hot water & cold supply pipes and tighten.

Note: Use a strap wrench on the offset threaded pipe connectors as not to mar the treads or finish

2. Use a level to verify the Offset Threaded Pipe Connectors are aligned properly.
3. Thread the inner Rings (17) onto the Offset Threaded Pipe Connectors. Place the Escutcheons (19) onto the Inner Rings with the facing the wall.
4. Attach the faucet (16) to the Offset Threaded Pipe Connectors and tighten.
5. Attach the Connecting Pipe (3) to the faucet (16). Use a level to verify that the Shower Pipe is plum. Properly align all components and mark the location of the Mounting Bracket (9) on the wall.

6. Remove the Shower Pipe (3) and drill holes at the locations marked in the previous step. Insert the wall anchors (10) and attach the Mounting bracket (9) and secure to the wall.
7. Connect the Shower Pipe (3) and O-ring (5) onto the shower Pipe (3) and tighten snug

### **Maintenance**

- Always test your cleaning solution on an inconspicuous area before applying to the entire surface.
- Wipe surfaces clean and rinse completely with water immediately after applying cleaner. Rinse and dry any overspray that lands on nearby surfaces.
- Do not allow cleaner to soak.
- Use a soft, dampened sponge or cloth. Never use an abrasive material such as a brush or scouring pad to clean surfaces.
- If the water flow is reduced or the water is abnormal, turn off the water and unscrew the shower head and clean the filter.