

# Strom Plumbing

BY  
Sign of  the Crab

Ph: (916) 638-2722 / Fax: (916) 638-2725

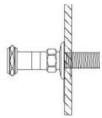
## Installation Information

### Item #P1037

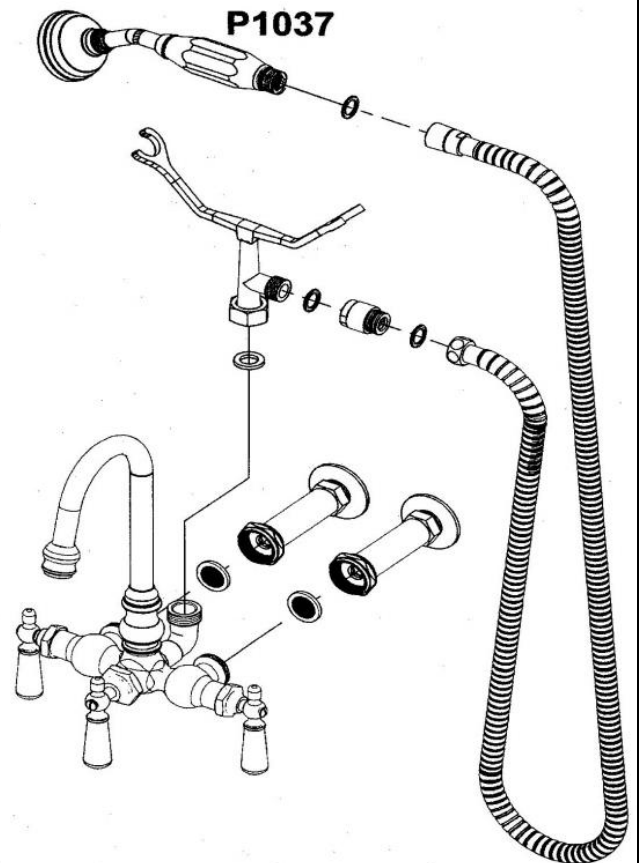
### Wall Mount Faucet with 3 3/8" Centers

**Warranted only when installed by a qualified, licensed plumber. Please use Teflon tape on all threaded connections.**

1. Shut off the water supply to the fixture before installation.
2. Rough in 1/2" IPS male pipe, 1/2" past the finished wall, with 3 3/8" centers.



3. Thread on the wall mount couplers. Insert the screen washer into the nut of the coupler.
4. Attach the faucet body to the wall mount couplers and tighten nuts to secure.
5. Attach the spout and tighten the hold down nut to hold in place.
6. Attach the handles with the screws provided.
7. Attach the "Y" cradle and washer to the faucet elbow by tightening the nut.
8. Add the vacuum breaker to the outlet of the cradle.
9. Attach hose end with nut and washer to the vacuum breaker and the tapered end of the hose with washer to the handheld shower.
10. Rest your handheld shower on the cradle.
11. Remove the aerator from the end of the spout and turn on the water supply to flush the hot and cold lines until the water is clear.
12. Make no adjustments to valves or valve stems. They are tested at the factory for optimum performance.



#### Parts Included:

- Faucet Body
- Gooseneck Spout
- Handles (3)
- Wall Mount Coupler, pair
- Handshower Inlet Cradle
- Handheld Shower
- Vacuum Breaker

