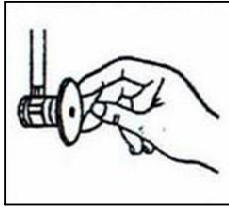


Professional Installation Required

Important Safety Instructions:

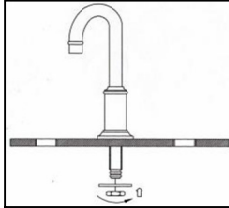
- **Please read all instructions carefully and completely before beginning installation.**
- Remove all parts and hardware from the box and lay out on a clear workspace, along with any plastic protective packaging.
- Do not dispose of any packaging or contents until assembly is complete to avoid accidentally discarding small parts or hardware.

(1)



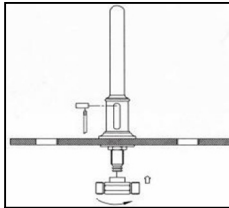
Turn off water supply lines. Remove existing faucet.
Clean area on lavatory sink surface before installing new faucet.
Make sure drain is closed or blocked to avoid small parts falling down to the drain.

(2)



Install new faucet spout assembly into the center hole of the sink.
Align spout (G1). Tighten mounting hardware (G4&5) from underneath the sink.

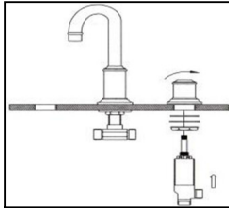
(3)



Screw connector (G7) onto the end of the spout (G1) Stop when it seals.

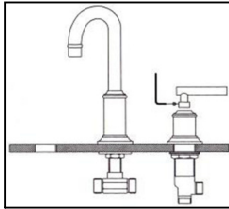
Keep the knob (G2) on the hole back of the spout. Insert pop-up rod (G3) into the hole from the bottom of the spout, then screw with the knob.

(4)



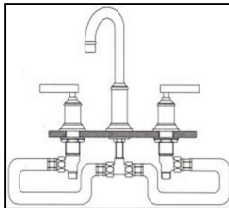
Insert both assemblies (G12~G18) from underneath the sink.
Be sure the hot is on the left side and cold is on the right side. The stem on the left side of the spout (hot) is labeled with a red o-ring, cold side with blue.
Hold the body in proper position; tighten mounting hardware (included) at the top first. Be sure both sides have the same height of threads exposed.
Hand tighten the bottom hardware from underneath the sink.

(5)



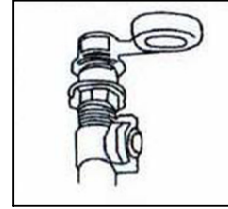
Put lever-handles (G9) on the stem of handle assemblies. Use Allen wrench (G11) tighten the set screw (G10) on the side of handle.

(6)



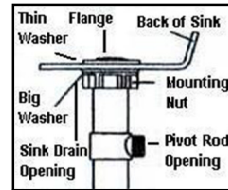
Connect the flexible hose (G19) from the supply shank side port (G18) to the connect Tee (G8).

(7)



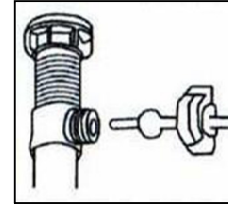
Thread mounting nut and bottom gasket onto drain body (G24).
Wrap top threaded end of the drain body with plumbers' tape.

(8)



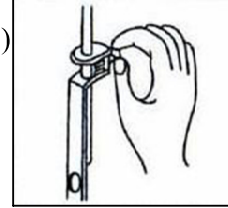
Install drain body (G24) up through the drain opening and reattach the flange (G22&G23) onto drain body, holding the drain body in position with pivot rod opening facing the back of sink.
Tighten the mounting nut by hand.

(9)



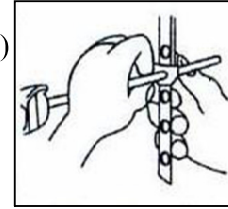
Place pivot rod (G25&26) into pivot rod opening. Slide pivot nut (G27) over pivot rod and thread it on the drain body. Tighten firmly.

(10)



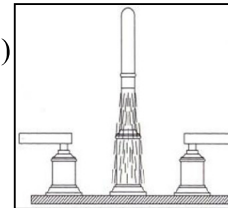
With lift rod in position on the faucet, insert lift rod through lift rod strap (G29) and secure with the clevis screw (G30).

(11)



Guide the pivot rod (G26) through one of the holes on the lift rod strap (G29). Secure it with the spring clip (G28). Adjust the height of the lift rod by resetting the clevis screw.

(12)



Connect the hot and cold water supply lines to their respective supply shank (G18) bottom ports. Remove the aerator. Turn on the main water supply and check for leaks. Allow both hot and cold water to run for one minute. Replace the aerator. Assembly is complete.