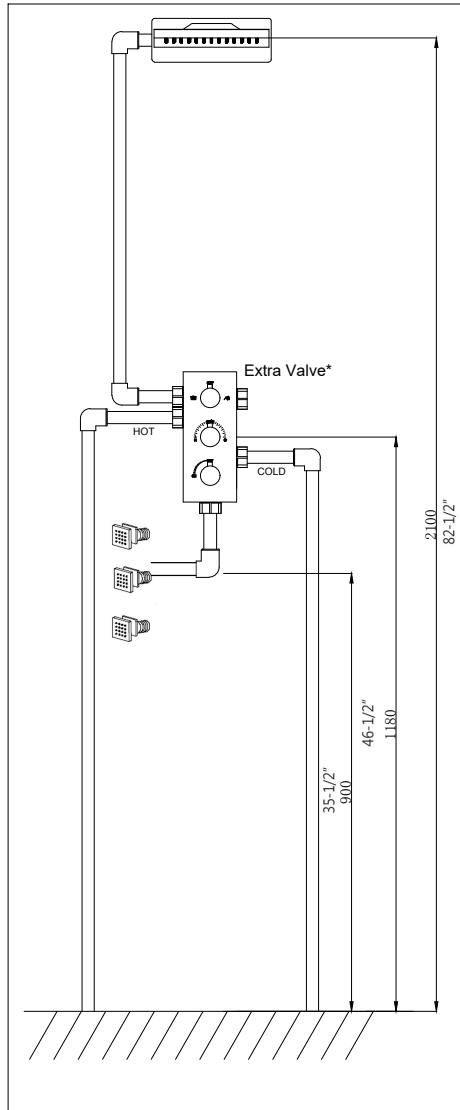


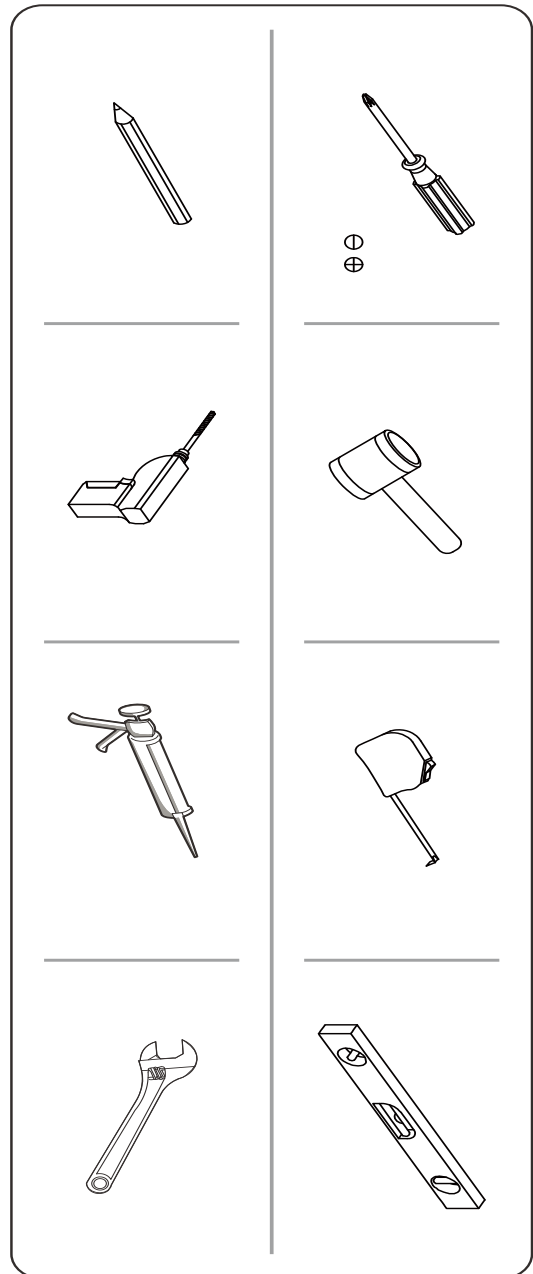
INSTALLATION

Suit for 3 functions concealed thermostatic faucets:

Pipes connecting:



PREINSTALL TOOLS



A

B

C

X 3

D

E

Product List

1. Faucet body
2. Panel
3. Spare parts package

Wall Depth: 2-1/2" (63MM)

Tile thickness range: 3/4"-1-3/8" (20-35mm)

Hidden joints for the upper and lower water outlets must line up with the installed plumbing.

1 Flush the pipelines

1. Turn the handle to the 'H' position and let the water run for a few minutes to flush the pipes.

2 Correctly connect all hot and cold water pipes.

Hot water inlet, Cold water inlet, Hot water outlet, Cold water outlet

3 Pay attention to the dimensions provided above. The recessed part of the decorative surface should not exceed the adjustable size line. The thickness of the wall should be within the range of 20-35mm.

4 Turn the handle to the 'H' position and carefully remove the protective plastic casing.

Turn the handle to the 'H' position and carefully remove the protective plastic casing.

5 Cut off any excess protective plastic casing beyond the decorative surface and dispose of it.

6 Remove the installation box cover and dispose of it.

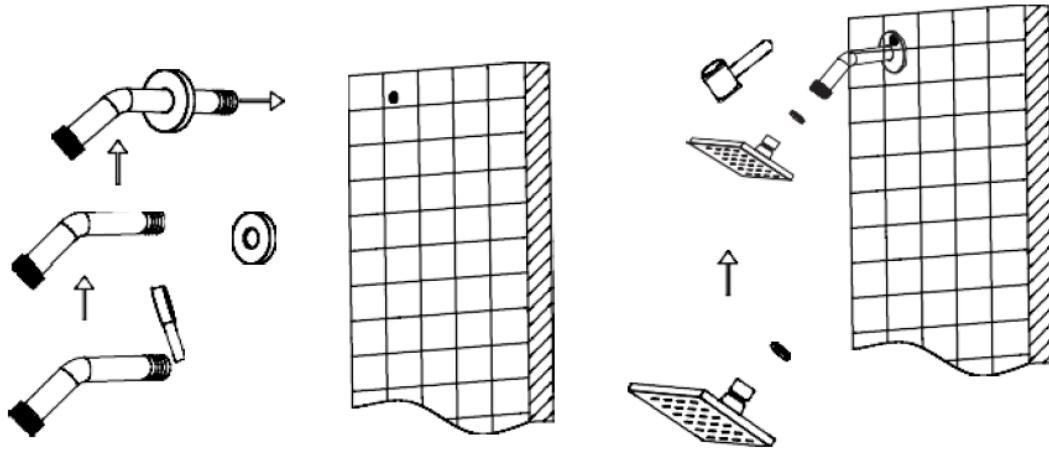
7 For future maintenance purposes, shut-off valves are provided on the mixer valve.

8 Install the decorative plate.

9

1. Install and tighten the handle.
2. Screw the rod into the handle.

Shower Arm and Shower Head:



1. Apply teflon tape or thread sealant to the threads on the shower arm, then thread it into the prepared fitting in the wall. Protect the finish on the arm with a cloth while tightening with a wrench.

INSTALLATION TOOLS YOU MAY NEED



Teflon Tape



Thread Sealant



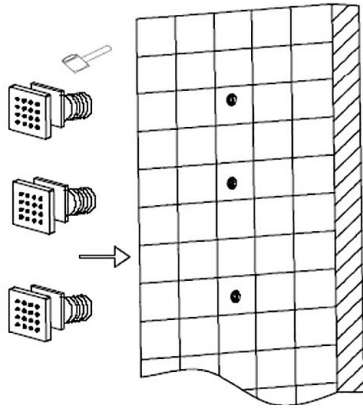
Adjustable
Wrench



Strap Wrench

INSTALLATION STEPS

Body Jets



1. Install each of the body jets by threading them into the prepared female fittings. Be sure to use the decorative escutcheons to conceal the rough-ins. Apply teflon tape or thread sealant to the threads before tightening.

INSTALLATION TOOLS YOU MAY NEED



Teflon Tape



Thread Sealant



Adjustable
Wrench



Strap Wrench