

General Tub Wall Shower System Installation Instructions

Please Note: We are providing general guidelines for a standard installation as we cannot account for the individuality of the site or items you may be working with.

Tools Layout:

1. The most important tool to use when installing a faucet and supply lines is a licensed plumber. Most manufacturers will not accept warranty claims on items not installed by a licensed plumber.
2. [1/2" Tubing cutter](#)



3. [Strap wrench](#)



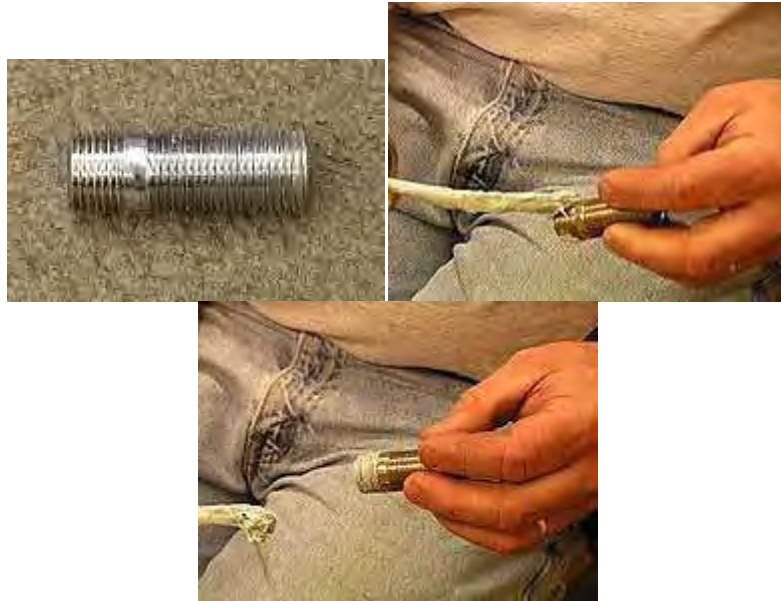
4. [Smooth jawed pipe wrench](#)



5. [Thread Sealant](#) (Teflon tape or liquid form) - Liquid thread sealant should not be used for installation on supercoated brass. If used, the item will not be covered under the manufacturer's warranty. The manufacturer recommends using teflon tape on the threaded connections.
6. [Tape Measurer](#)

Instructions:

1. Apply a liberal amount of thread sealant to the short end of the faucet nipple. (Use teflon tape instead of thread sealant if the finish is supercoated brass).



2. Tighten the faucet nipple to the 1/2" thread on the faucet swing arm. You want to hand tighten a 1/4 turn using the strap wrench.



3. Repeat on the opposite side.

4. Take the faucet swing arm and place it in front of the faucet hole.



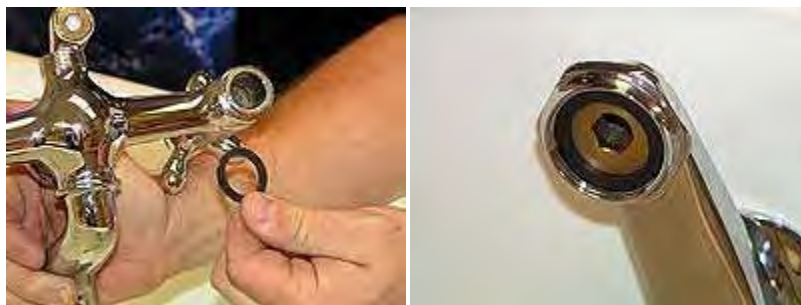
5. Apply the jam nut / lockdown nut to the back of the faucet nipple. (Do not tighten yet).



6. Repeat on the opposite side.



7. To attach the faucet body to the swing arms you will need to take the lock nut washer and install in the lock nut.



8. Tighten the lock nut to the faucet.



9. Repeat on the opposite side.

10. Apply the strap wrench to the lock nut and then hand tighten a 1/4 turn.



11. Use your sight to center the faucet the best you can.

12. Use the smooth jawed pipe wrench to tighten the jam nuts on the back of the tub. (Be careful not to over tighten to prevent cracking of the porcelain).



13. Place the cone washer into the shower opening. Screw the diverter valve into shower opening.



14. Use the pipe wrench to tighten the lock nut.



15. Slide the wall tee onto the shower head pipe.



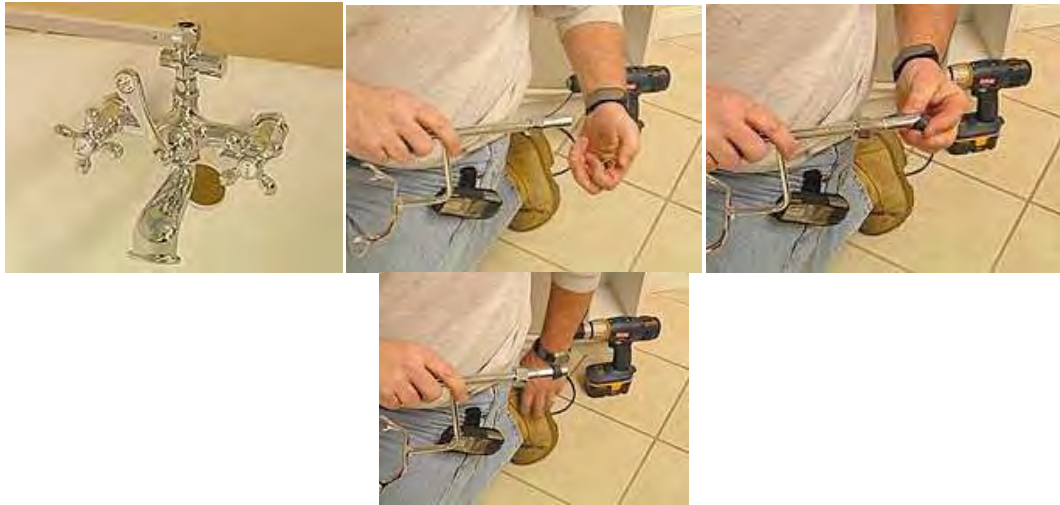
16. Screw in the 2nd part of the riser pipe to the shower head pipe.



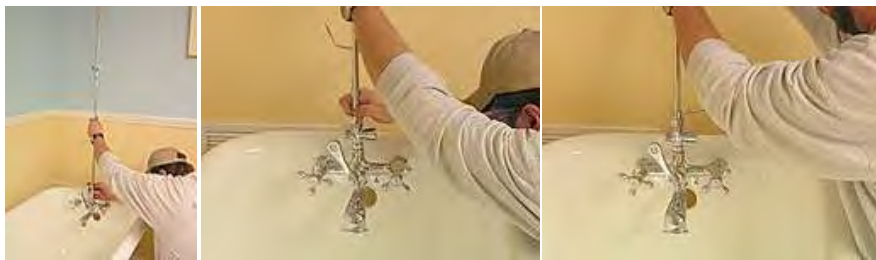
17. Place the arm for the hand held shower onto the riser pipe.



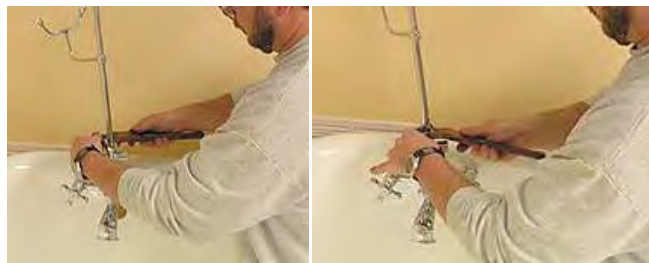
18. Take the locknut from the diverter valve and place it at the bottom of the riser pipe. Slide the friction ring and washer onto the bottom of the riser pipe.



19. Screw the locknut at the bottom of the riser pipe to the faucet body. (Note: if the cone washer included is too big, then have the plumber switch it with a smaller cone washer or shave it down to the correct size)



20. Use the pipe wrench to tighten the locknut.



21. Measure from the wall to center of the diverter valve.



22. Use the measurement from step 21 to measure from the wall to the center of the pipe.



23. Take this measurement and subtract $\frac{1}{2}$ " (this is to incorporate the distance of the center to the thread of the bracket).

24. Mark the measurement on the wall brace and use the $\frac{1}{2}$ " tubing cutter to cut the brace.



25. Slide the escutcheon onto the wall brace.



26. Measure from the side wall to the center of the diverter valve.



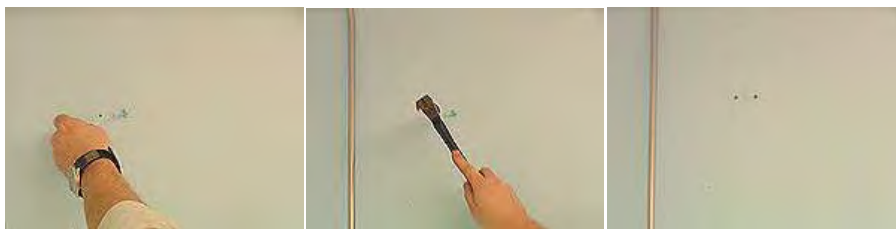
27. Hold the escutcheon at the measurement from 26 to mark the two holes with a pencil.



28. Use the power drill to drill holes (Note: 1/4" drill bit is required)



29. Take the provided anchors and hammer into the wall.



30. Place the screws into the escutcheons and use the screwdriver to screw into the anchors in the wall.



31. Slide the post into the bracket and tighten the set screw.



32. Level the post and tighten the front set screw.



33. Tighten the set screw on the shower handle.



34. Screw the hose to the diverter valve and set the hand shower on the cradle.



35. Use channel locks to tighten the hose locknut.

