

# General Sink Trim Kit Installation Instructions

**Please Note:** We are providing general guidelines for a standard installation as we cannot account for the individuality of the site or items you may be working with.

Tools Layout:

1. The most important tool to use when installing a pedestal sink is a licensed plumber. Most manufacturers will not accept warranty claims on items not installed by a licensed plumber.
2. [1/2" Tubing cutter](#)



3. [Adjustable wrench](#)



4. [Basin wrench](#)



5. [Curved-jaw channel locks \(pliers\)](#)



6. [Plumber's putty](#)



7. [Tape Measurer](#)

Instructions:

1. Trap adaptor will be located 17" above finished floor. (This measurement is product specific)



2. Shut off valves will be located 3 1/4" distance from locknut to finished wall and 21" from the floor to the center of the shut-off valves. (This measurement is product specific)



3. Rough in 8" on centers. (Average measurement, confirm using your specific product)



4. There are 3 types of wall brackets that can be used to mount your sink to the wall.



5. Place a toggle bolt to the back of the sink.



6. Place the sink on the pedestal base making sure the toggle bolts go into the 7" mounting holes in the wall.



7. Tighten the bolts.



8. Bend your supply lines so that the distance of the bend is 2" center to center.



9. Screw the top of the supply lines to the end of the faucet nipples.



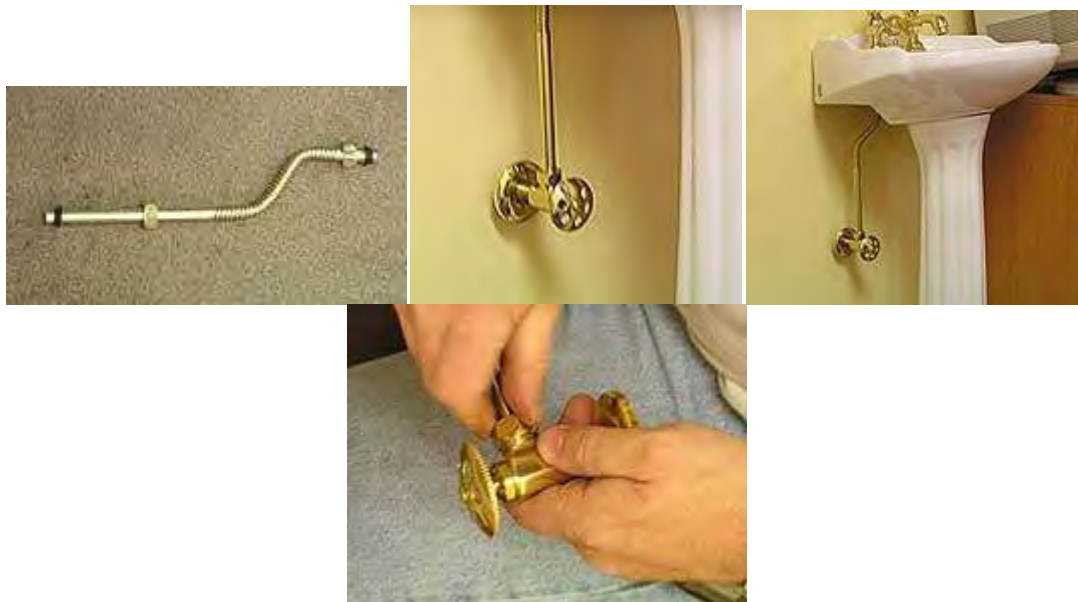
10. Measure from the top of the supply line to the shut off valve.



11. Mark this measurement on the supply lines and use a 1/2" tubing cutter to cut the supply lines.



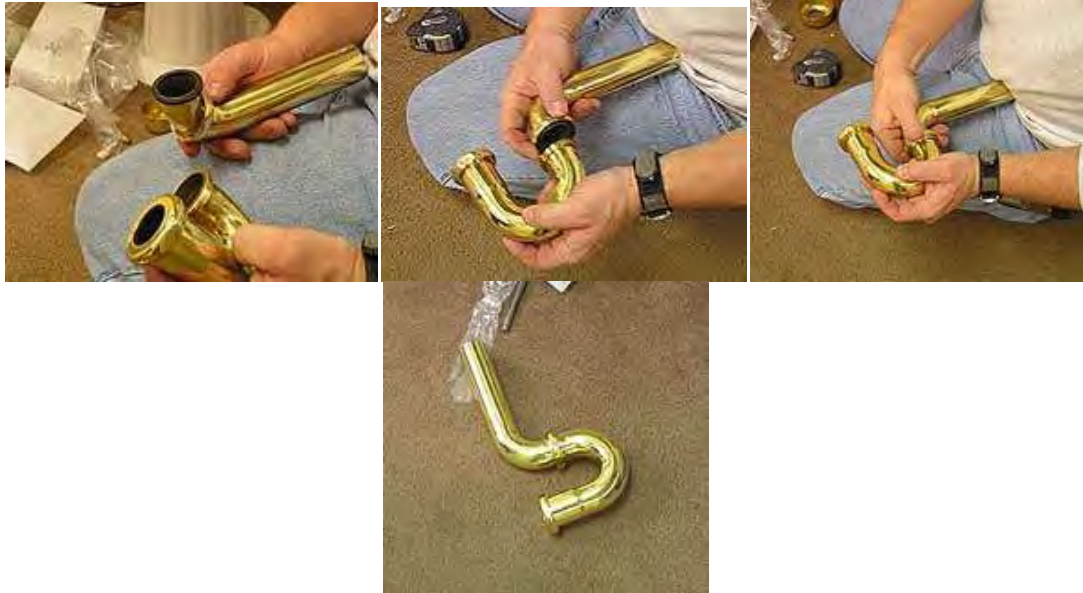
12. Place the lock nut and washer on the end of the supply line and screw into the shut off valve.



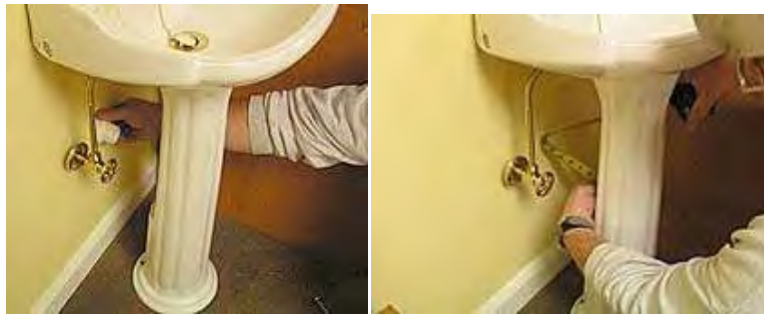
13. Place the washer on the top of the J-trap neck.



14. Screw the P-trap neck to the J-trap neck.



15. Measure from the end of the trap adaptor to the end of the PO plug tailpiece.



16. Use the measurement to cut the overall length of the drain.



17. Tighten the 3 trap locknuts using the channel locks.



18. Make sure the lock nuts are securely tightened.



19. You may have spare parts as shown.

