

General Handshower Kit - Add On Hand Held Conversion

Please Note: We are providing general guidelines for a standard installation as we cannot account for the individuality of the site or items you may be working with.

Tools Layout:

1. The most important tool to use when installing a shower enclosure is a licensed plumber. Most manufacturers will not accept warranty claims on items not installed by a licensed plumber.
2. [Strap wrench](#)



3. [1/2" Tubing cutter](#)



4. [Smooth jawed pipe wrench](#)



5. [Straight-Jaw Channel Locks \(Pliers\)](#)



6. [Level](#)



7. [Power Drill](#)



8. [Thread Sealant](#) (Teflon tape or liquid form).
9. [Screwdriver](#)
10. [Hammer](#)
11. [Tape Measurer](#)

Instructions:

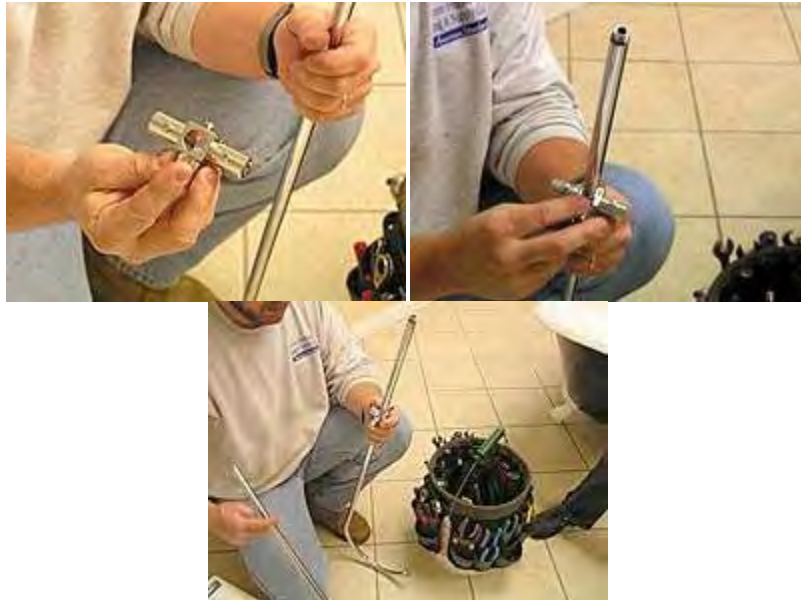
1. Place the cone washer into the shower opening. Screw the diverter valve into shower opening.



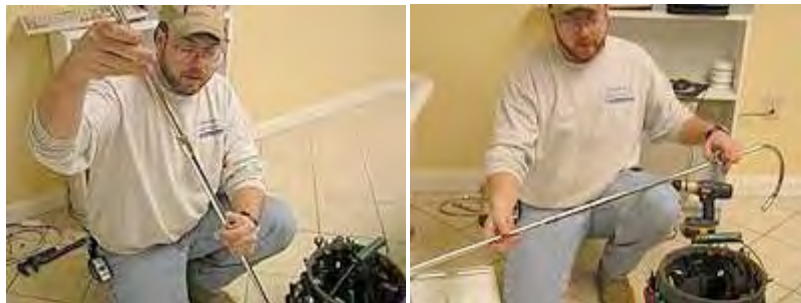
2. Use the pipe wrench to tighten the lock nut.



3. Slide the wall tee onto the shower head pipe.



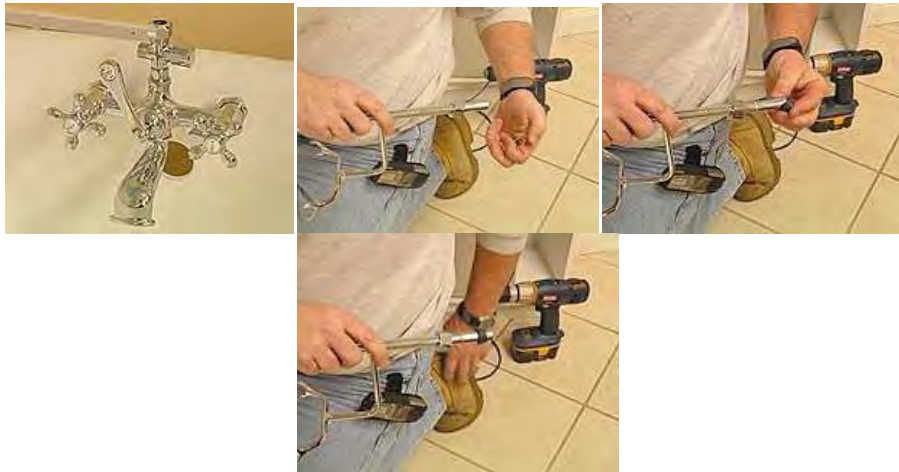
4. Screw in the 2nd part of the riser pipe to the shower head pipe.



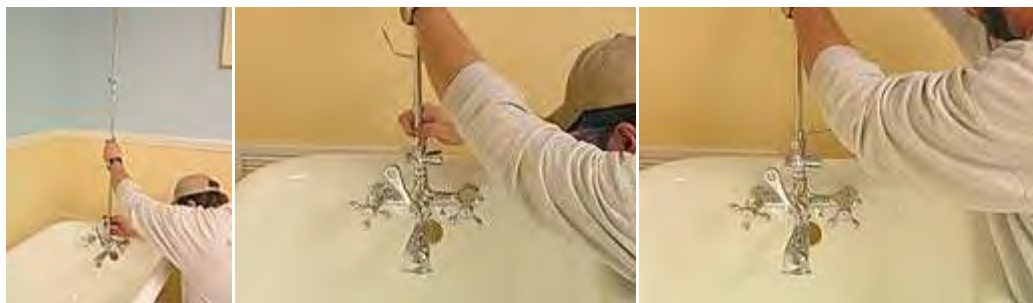
5. Place the arm for the hand held shower onto the riser pipe.



6. Take the locknut from the diverter valve and place it at the bottom of the riser pipe. Slide the friction ring and washer onto the bottom of the riser pipe.



7. Screw the locknut at the bottom of the riser pipe to the faucet body. (Note: if the cone washer included is too big, then have the plumber switch it with a smaller cone washer or shave it down to the correct size)



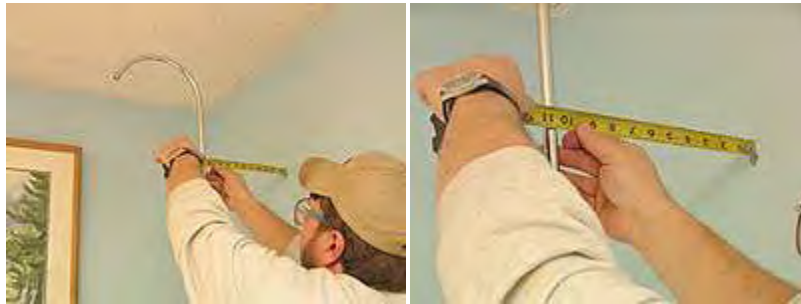
- Use the pipe wrench to tighten the locknut.



- Measure from the wall to center of the diverter valve.



- Use the measurement from step 9 to measure from the wall to the center of the pipe.



- Take this measurement and subtract $\frac{1}{2}$ " (this is to incorporate the distance of the center to the thread of the bracket).

- Mark the measurement on the wall brace and use the $\frac{1}{2}$ " tubing cutter to cut the brace.



13. Slide the escutcheon onto the wall brace.



14. Measure from the side wall to the center of the diverter valve.



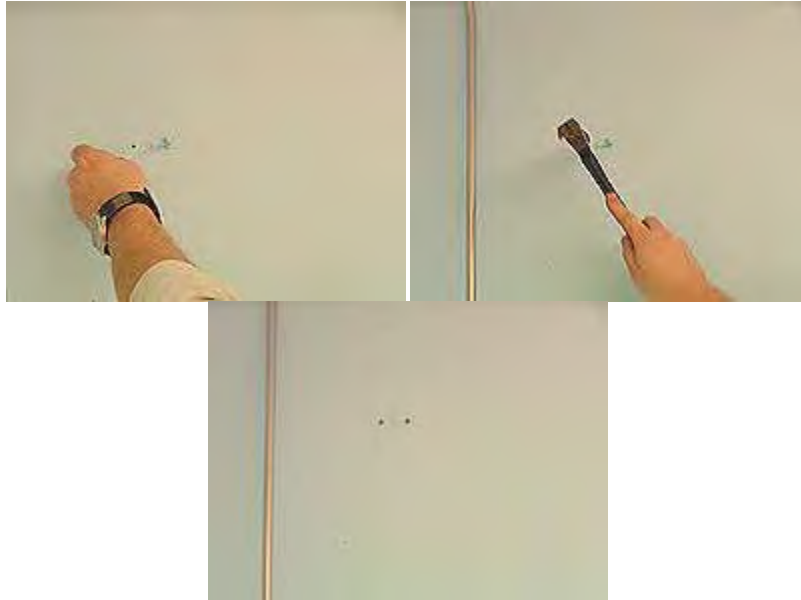
15. Hold the escutcheon at the measurement from 14 to mark the two holes with a pencil.



16. Use the power drill to drill holes (Note: 1/4" drill bit is required)



17. Take the provided anchors and hammer into the wall.



18. Place the screws into the escutcheons and use the screwdriver to screw into the anchors in the wall.



19. Slide the post into the bracket and tighten the set screw.



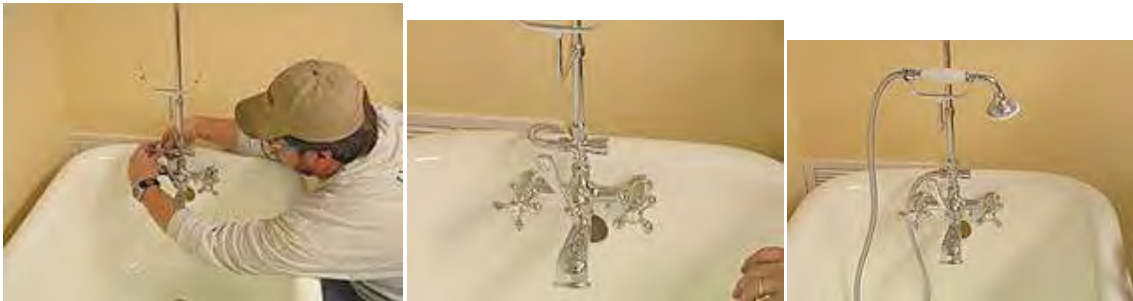
20. Level the post and tighten the front set screw.



21. Tighten the set screw on the shower handle.



22. Screw the hose to the diverter valve and set the hand shower on the cradle.



23. Use channel locks to tighten the hose locknut.

