

General Deck Mounted Supply Lines With Shut-Off Valves Installation Instructions & General Deck Mount Faucet Installation Guide

Please Note: We are providing general guidelines for a standard installation as we cannot account for the individuality of the site or items you may be working with.

Tools Layout:

1. The most important tool to use when installing a faucet and supply lines is a licensed plumber. Most manufacturers will not accept warranty claims on items not installed by a licensed plumber.
2. [1/2" Tubing cutter](#)



3. [Strap wrench](#)



4. [Smooth jawed pipe wrench](#)



5. [Thread Sealant](#) (Teflon tape or liquid form) - Liquid thread sealant should not be used for installation on supercoated brass. If used, the item will not be covered under the manufacturer's warranty. The manufacturer recommends using teflon tape on the threaded connections.
6. [Tape Measurer](#)

Instructions:

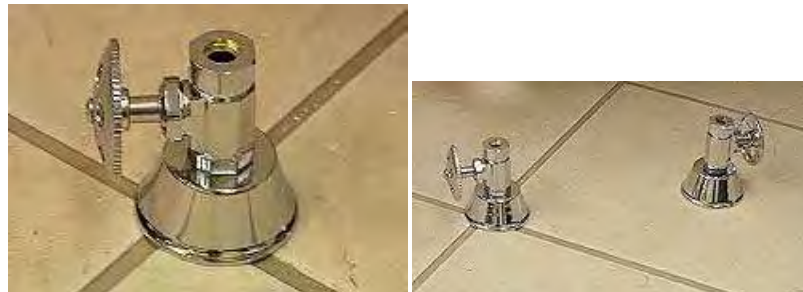
1. The rough-in for your supply lines with shut off valves are 7" centers, with 1 1/2" threads above the floor, and 3/4" O.D.



2. Place the escutcheon plate over the rough-ins.



3. Tighten the 1/2" shut off valve to the rough-in using the smooth jawed pipe wrench.



4. Apply a liberal amount of thread sealant to the short end of the faucet nipple. (Use teflon tape instead of thread sealant if the finish is supercoated brass).



5. Tighten the faucet nipple to the 1/2" thread on the deck mount coupler. You want to hand tighten a 1/4 turn using the strap wrench.



6. Repeat on the opposite side.
7. Place deck mount coupler with nipple through the faucet hole.
8. Apply the jam washer and the jam nut to the back of the faucet nipples. (Do not tighten yet).



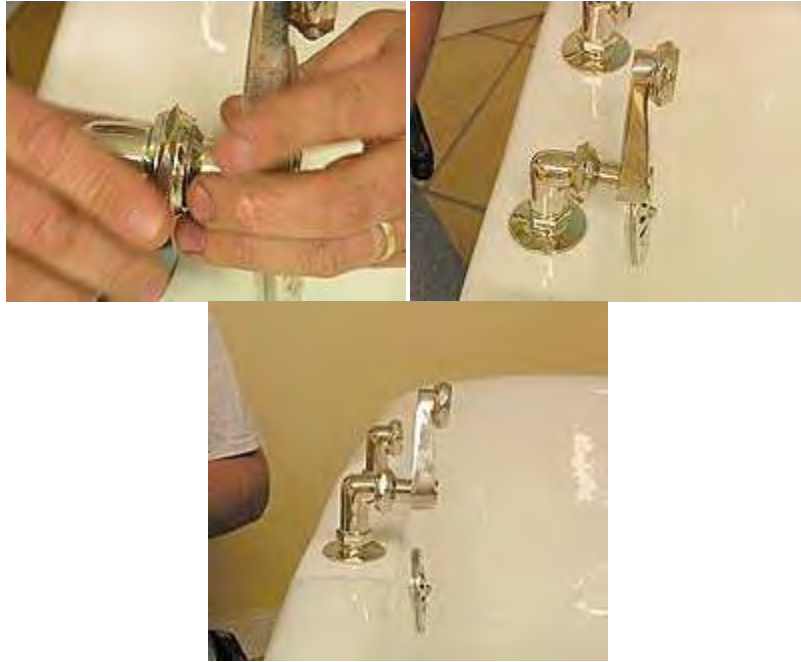
9. Repeat on the opposite side.



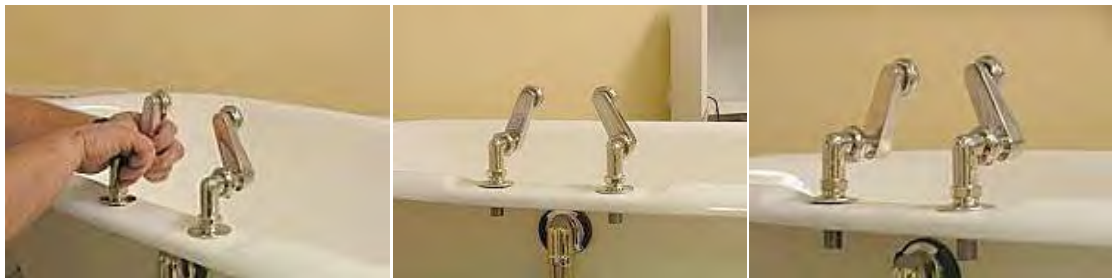
10. Take the lock nut washer and install in the lock nut to attach the modified swing arm to the deck mount coupler.



11. Tighten the lock nut to the swing arm. Hand-tighten a 1/4 turn using strap wrench.



12. Repeat on the opposite side.



13. Hand tighten the lock nuts to the faucet body.



14. Apply the smooth jawed pipe wrench to the lock nut and tighten a 1/4 turn.



15. Use your sight to center the faucet the best you can.

16. Use the smooth jawed pipe wrench to tighten the jam nut connections at the faucet and deck mount couplers.



17. To attach the supply lines, you first need to measure the length. In order to find out this measurement, you will need to measure from the floor to the flat bottom portion of the faucet nipple.



18. Then measure from the floor to the top of the compression nut. From this measurement you will want to subtract 1/2" (this measurement is the depth of the compression fitting).



19. Subtract measurements from line 17 and 18 and you will have your overall length.

20. Mark the measurement on the supply lines **from the ferrel**, not from the top of the supply line.



21. Use a 1/2" tubing cutter to cut to size.
22. Slide the lock nut that attaches to the faucet nipple onto the supply lines and place the washer at the tip of the supply line, above the ferrel.



23. Remove the compression lock nut from the shut off valve. Slide the compression lock nut, the friction ring (make sure to choose the right size), and the supply washer (make sure the beveled end is facing towards the faucet) to the bottom of the supply line.



24. Repeat last step for the 2nd supply line.

25. Screw the 1/2" compression lock nut to the top of the shut off valve.



26. Using the smooth jawed pipe wrench, screw the lock nut at the top of the supply line to the faucet nipple.



27. Hand tighten the lock nut a 1/4 turn using the smooth jawed pipe wrench to tighten the lock nut.



28. Repeat on the opposite side.



29. To attach the handshower holder, attach the washer to the lock nut.



30. Attach the lock nut to the faucet body.



31. Use the smooth jawed pipe wrench to tighten lock nut. Turn until tight.



32. Attach the shower hose lock nut to the arm.



33. Use the strap wrench to tighten the hose lock nut.



34. Place handshower on the holder.



35. You may have extra parts as shown.

