



Elizabethan Classics

Assembly Instructions for WS01 thru WS07

NOTE: USE TEFLON TAPE ON ALL THREADED CONNECTIONS

Shut off the water supply valve under the sink. Remove your old faucet and pop-up assembly. Cover the sink drain so that no small parts are lost down it. Caution: Do not damage your old water supply lines. Clean the surface of the sink in preparation for installing the new faucet.

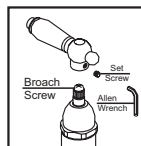
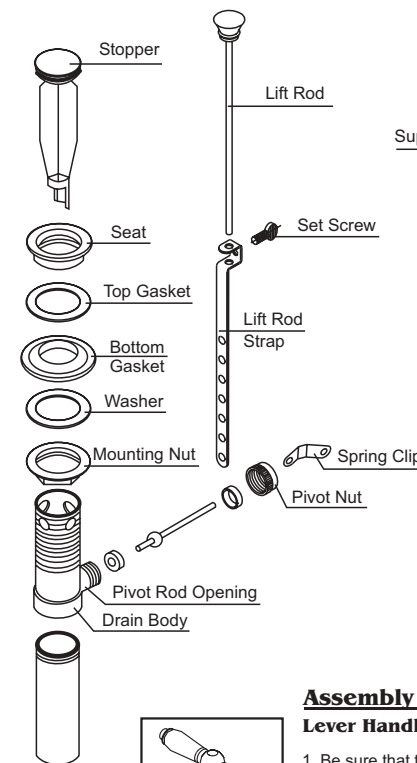
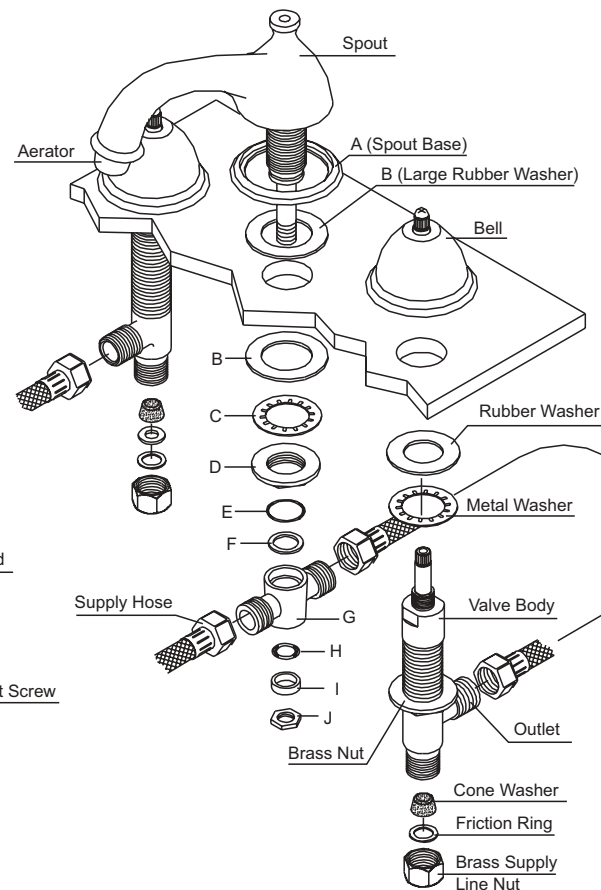
FAUCET INSTALLATION:

1. Unscrew the bell from the hot valve body. Thread the brass nut, metal washer and rubber washer downer the valve body. Insert the hot valve body in the left hole of sink from underneath. Screw the bell onto the valve body securely. Tighten the brass nut tight.
2. Unscrew the brass locking nut (I), and remove the brass washer (H) and O-ring (G). Remove the T-connector (F), and washer (E). Install the spout, large rubber washer (B) and spout base (A) in the center hole of the sink. Place the large rubber washer (B), metal washer onto the threaded shank and secure with large lock nut (D). Tighten wrench tight. Make sure the washer (E) is inside the T-connector (F), then re-attach the T-connector (F), O-ring (G), brass washer (H) and brass locking nut (I). Tighten the brass locking nut (I) tight by using a wrench.
3. Repeat step 1 for the cold valve body.
4. Attach supply hoses to each side of the T-connector (F) and to the outlets of the valve bodies.
5. Connect supply lines (sold separately) to the thread shanks. Tighten brass supply line nuts securely. CAUTION: Overtightening can strip or over stress threads.
6. Install handles.

POP-UP INSTALLATION:

1. Unscrew seat and top gasket from pop-up assembly.
2. Slip drain body through the drain opening and screw seat and top gasket onto the drain body.
3. Drop stopper into place. Remove pivot nut and insert pivot rod into pivot rod opening, making sure the pivot rod engages the stopper properly.
4. Remove spring clip from pivot rod and slide pivot nut over pivot rod and thread onto pivot rod opening. Tighten firmly, being careful not to overtighten.
5. With lift rod in positing on the faucet, insert the lift rod through the lift rod strap and secure with the set screw.
6. Guide the pivot rod through one of the holes on the lift rod strap and secure it with the spring clip, then adjust the height of the lift rod by resetting the set screw.

AFTER INSTALLATION IS COMPLETED, remove the aerator. Turn on the water supply valves and allow both hot and cold water to run at least one minute each. While water is running, check for leaks, especially at hook-ups to supply lines. Tightening nuts slightly will stop any minor leaks.



Assembly Instructions for Handles

Lever Handles:

1. Be sure that the broach screws are tightened before installing the lever handles.
2. Install the lever handles on the broaches and tighten the set screws using the allen wrench provided.

Cross Handles:

1. Remove the screws from the top of the broaches.
2. Remove the insert caps from the cross handles.
3. Put the cross handles on the broaches and then tighten the screws. Insert the caps on the cross handles.

