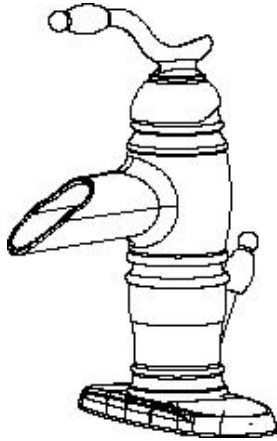




*Belle Forêt*  
collection

**N390 01**

## **SINGLE HANDLE LAVATORY FAUCET**



**N390 01**

### **Product Features**

- Single Post Mount or 4" Centerset Installation
- 2.2 GPM @ 60PSI water saving aerator
- Brass body with copper supply inlets
- 1/2" 14 NPS Inlet
- Ceramic cartridge
- Metal Lever Handle
- Brass pop up

### **Standard/Approvals**

- N390 01 meets or exceeds:
- ANSI/ASME A112.18.1
- ANSI/NSF 61 – Sec 9
- IAPMO/UPC
- California Proposition 65
- Massachusetts
- Meets ADA requirements



UPC®



### **PRODUCT SPECIFICATION:**

Single-handle lavatory faucet shall have a brass body, ceramic cartridge, open spout and metal lever handle. Product shall be able to be installed in either single hole or 4" centerset applications. Product shall be Belle Forêt model N390 01.



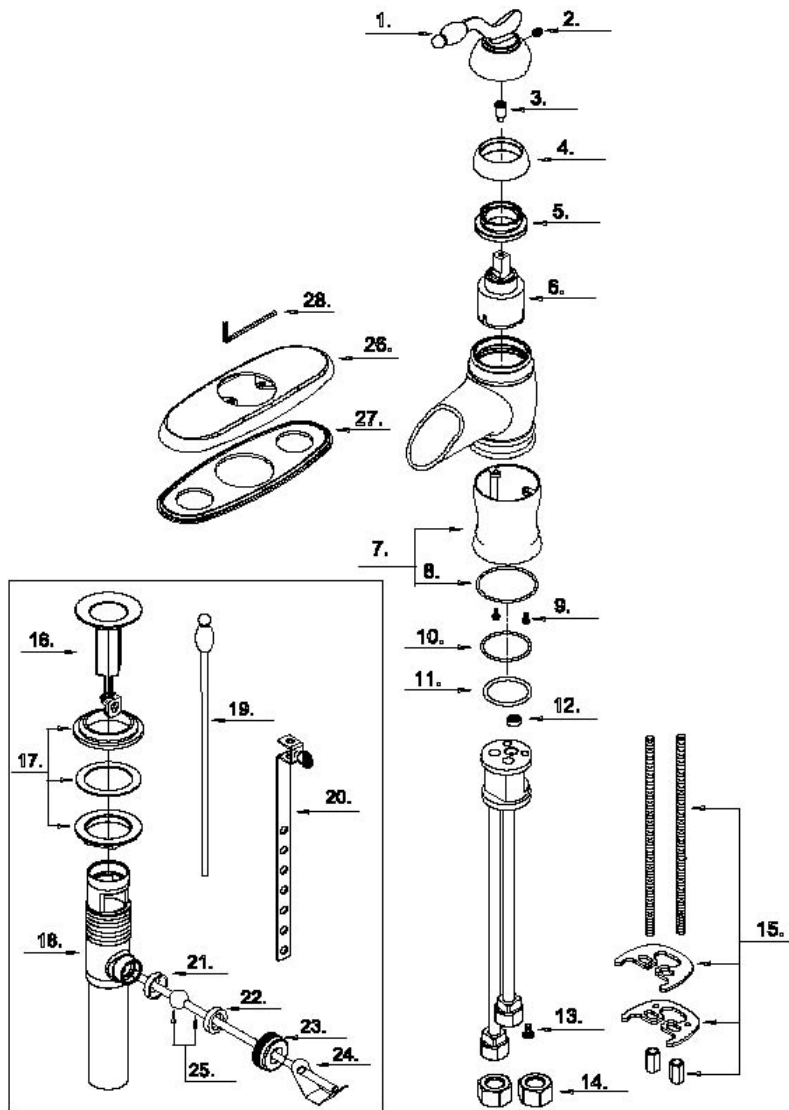


Belle Forêt  
collection

N390 01

# SINGLE HANDLE LAVATORY FAUCET

## PARTS BREAKDOWN





*Belle Forêt*  
collection

**N390 01**

**SINGLE HANDLE LAVATORY FAUCET**

**PARTS LISTING**

NO	Part Name	Part Number	Q'ty
1	Metal Handle	A029630xx	1
2	Screw(M5 * 5mm L)	A008003	1
3	Handle Adaptor	A017956	1
4	Trim Cap	A103016xx	1
5	Locking Nut	A104265	1
6	Ceramic Disc Cartridge	A507348N	1
7	Base Trim Ring	A667227xx	1
8	O-Ring( $\Phi$ 1-5/8" ID * $\Phi$ 1-3/4" OD)	A048087	1
9	Screw(M3 * 6 mm L)	A053029xx	2
10	O-Ring( $\Phi$ 1-5/16" ID * $\Phi$ 1-7/16" OD)	A004103N	1
11	O-Ring( $\Phi$ 1-3/16" ID * $\Phi$ 1-3/8"OD)	A048016N	1
12	Flow Restrictor	A113571N	1
13	Screw(3/16" -24 * 5/16 " L)	A008616	1
14	Coupling Nut	A009016	2
15	Mounting Hardware	A663107	1
16	Pop-up Plunger Assembly	A663121xx	1
17	Washer and Nut	A663122	1
18	Pop-Up Body	A605222	1
19	Lift Rod	A025470xx	1
20	Lift Rod Strap	A663521xx	1
21	Washer (inner)	A200109	1
22	Washer (outer)	A200009	1
23	Ball Nut	A009063	1
24	Spring Clip	A120030	1
25	Ball Rod (6-5/16" L)	A026004xx	1
26	Cover Plate	A077567xx	1
27	Putty Plate	A011317xx	1
28	Hex Wrench(H2.5 * 19 mm L * 53 mm L)	A031000	1

xx designates finish matched parts.