

*Belle Forêt*  
collection

# N315

## Two Handle Vessel Filler

### Product Features

Wall Mount with variable rough-in depth

Minimum 2"

Maximum 2-7/8"

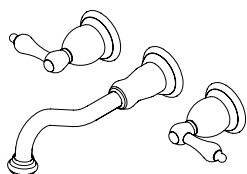
2.2GPM @60PSI water saving aerator

9-15/16" spout reach @ 2" rough-in

(8-3/8" @ 2-7/8" rough-in)

1/2" copper sweat inlets

Drip free ceramic cartridge

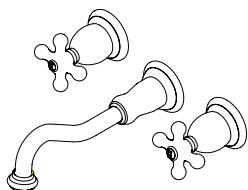


**N315 01**

Handle:

N315 01 Metal lever handle

N315 02 Metal cross handle



**N315 02**

### Standards/Approvals

N315 meets or exceeds:

ANSI/ASME A112.18.1

ANSI/NSF 61 – Sec 9

IAPMO/UPC

California Proposition 65

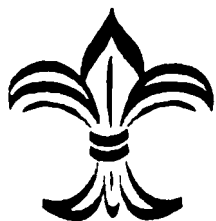
Massachusetts

UPC®



### PRODUCT SPECIFICATION:

Vessel filler shall have a brass body, ceramic cartridge, metal lever or cross handle.  
Product shall be Belle Forêt model N315 \_\_\_\_\_.

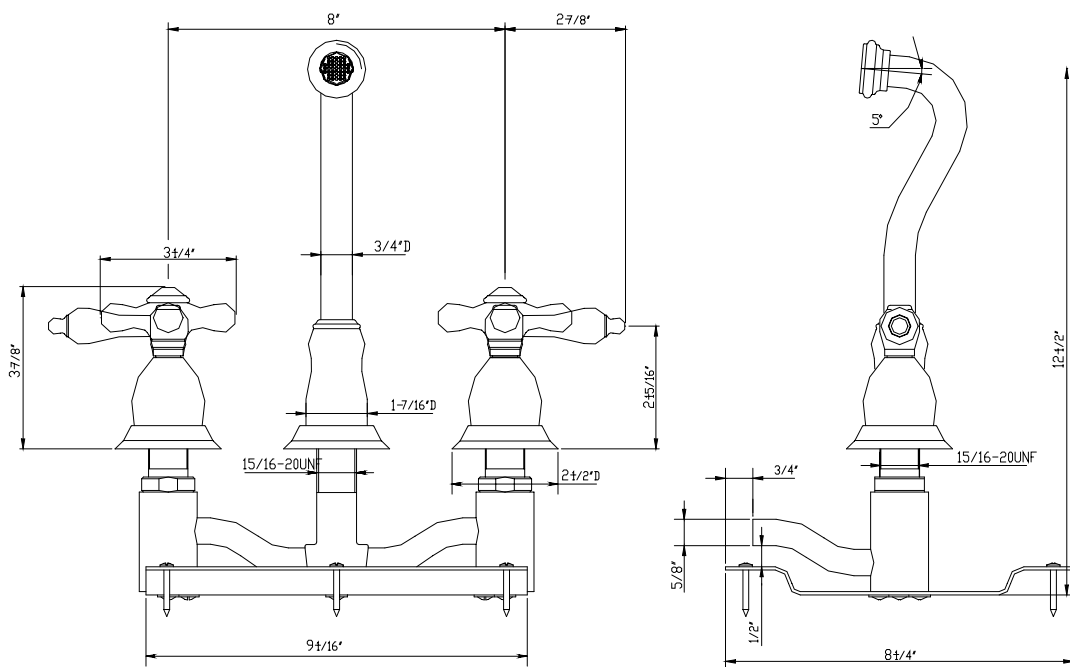


*Belle Forêt*  
collection

# N315

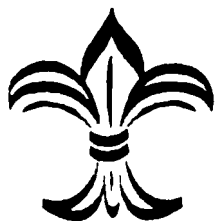
## Two Handle Vessel Filler

These measurements based on a rough-in of 2" from finished wall to mounting plate.



### Available Finishes

- Chrome
- Polished Brass
- Satin Nickel
- Oil Rubbed Bronze
- Matte Nickel
- Weathered Copper

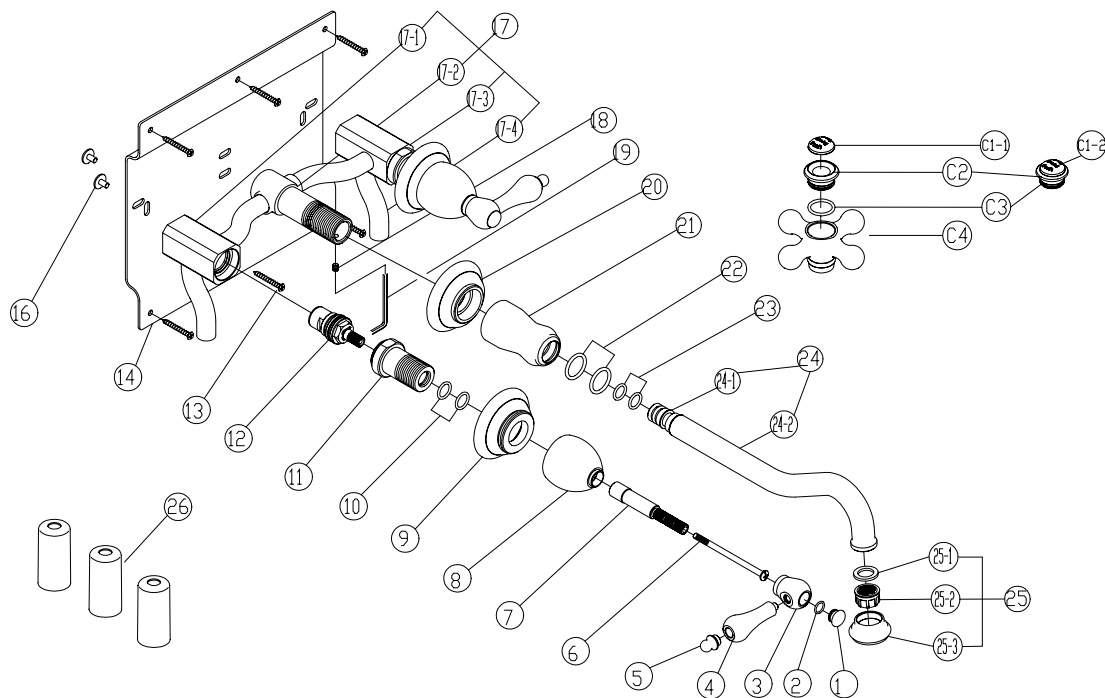


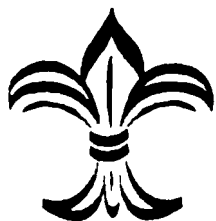
*Belle Forêt*  
collection

# N315

## Two Handle Vessel Filler

### PARTS BREAKDOWN





*Belle Forêt*  
collection

# N315

## Two Handle Vessel Filler

### PARTS LISTING

NO	Parts Name	YOW Parts #	Qty	NO	Parts Name	YOW Parts #	Qty
1	Index	GLH01xx	2	17	Body assembly	661381	
2	O-RING		2	17-1			1
3	Handle hub		2	17-2			1
4	Lever handle		2	17-3			1
5	Knob		2	17-4			4
C1-1	Index-English	663997xx	2	18	Set screw	663976	1
C2	Handle cap		2	19	Allen wrench		1
C3	O-RING		2	18	Set screw		1
C1-2	Index kit-French		2	19	Allen wrench		1
C2	Handle cap		2	20	Trim ring		667392xx
C3	O-RING	2	21	Canopy	1		
C4	Cross handle	GCRS01xx (includes indexes)	2	22	O-RING	2	
6	Screw	008024	2	23	O-RING	666641xx	2
7	Stem extension	663104	1	24	Spout assembly		
10	O-RING		1	24-1			1
11	Body extension		1	24-2		1	
8	Canopy	663105xx	1	25	Aerator	500768Nxx	
9	Trim ring		1	25-1			1
12 H	Hot Cartridge	507375N	1	25-2			1
12 C	Cold Cartridge	507376N	1	25-3			1
14	Wall plate	126689	1	26	Protective sleeve	038101	1
13	Screw	663975	6				
16	Screw		6				

xx designates finish matched parts.