



# Assembly Instructions

**MODEL# 140-03/140-04/141-03/141-04/142-03/142-04/145-03/145-04  
146-03/146-04/147-03/147-04**

**NOTE: USE TEFLON TAPE ON ALL THREADED CONNECTIONS**

1. Shut off the water supply valves before installation.
2. Please choose the illustration that matches your installation, and use the corresponding instructions.

**1: Single post mount installation (see illustration 1)**

Fit the decorative ring to the base of the faucet body. Insert the faucet body into the hole in the sink. Slide the rubber washer and metal washer onto the faucet body from underneath the sink, and secure by threading and tightening the lock nut.

Place spray base and spray holder in right hole of sink and attach the rubber washer, metal washer and lock nut to the spray holder from underneath sink. Tighten the lock nut.

**2: For 3 hole installation (see illustration 2)**

Thread a bolt onto the left bottom of the deck plate. Place plastic plate under the deck plate, smooth side to the sink. Center the hole in the deck plate over the appropriate hole on the sink, and temporarily tighten the deck plate mounting nut onto the bolt.

Fit the decorative ring to the base of the faucet body. Insert the faucet body through the hole in the deck plate and sink. Place rubber washer, metal washer and lock nut onto the faucet body and temporarily tighten lock nut. Align faucet body and deck plate, then secure into position with lock nut and deck plate mounting nut.

Discard the spray base. Place the spacer and spray holder in the hole on the deck plate and attach the rubber washer, metal washer and lock nut to the spray holder from underneath sink. Tighten the lock nut.

NOTE: Position the spacer edge marked "O" away from the faucet body (i.e. - If placing the sprayer on the right side of the faucet body, the "O" will be towards the right hand edge of the deck plate).

**3: For 4 hole installation (see illustration 3)**

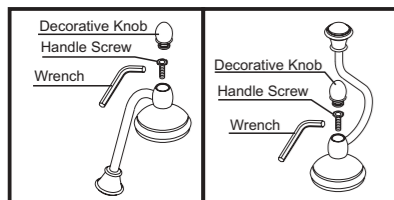
Thread bolts onto the bottom of the deck plate. Place the plastic plate under the deck plate, smooth side to the sink. Center the hole in the deck plate over the hole on the sink, and temporarily tighten the deck plate mounting nuts onto the bolts.

Fit the decorative ring to the base of the faucet body. Insert the faucet body through the hole in the deck plate and sink. Place rubber washer, metal washer and lock nut onto the faucet and temporarily tighten lock nut. Align faucet body and deck plate, then secure into position with lock nut and deck plate mounting nut.

Place spray base and spray holder in far right hole of sink and attach the rubber washer, metal washer and lock nut to the spray holder from underneath sink. Tighten the lock nut.

3. Connect the spray head to the spray hose. From above the sink, insert spray hose down through spray holder and attach to the spray tube.
4. Insert the spout onto the spout/body connector on the faucet body and tighten the collar.
5. Connect the supply lines (not included) to the supply tubes.
6. Install handle (see below).
7. Turn on water supply and check for leaks.

**Handle Assembly**



1. Remove the decorative knob from the handle assembly.
2. Put the handle onto the faucet and tighten the handle screw with wrench provided.
3. Replace the decorative knob.

